

Netherby-1 LWD RM 500MD

IDF

FPWD id13_0c_02

Format: VISION Service RM Log

Vertical Scale: 1:500

Graphics File Created: 01-Aug-2008 05:08

PIP SUMMARY

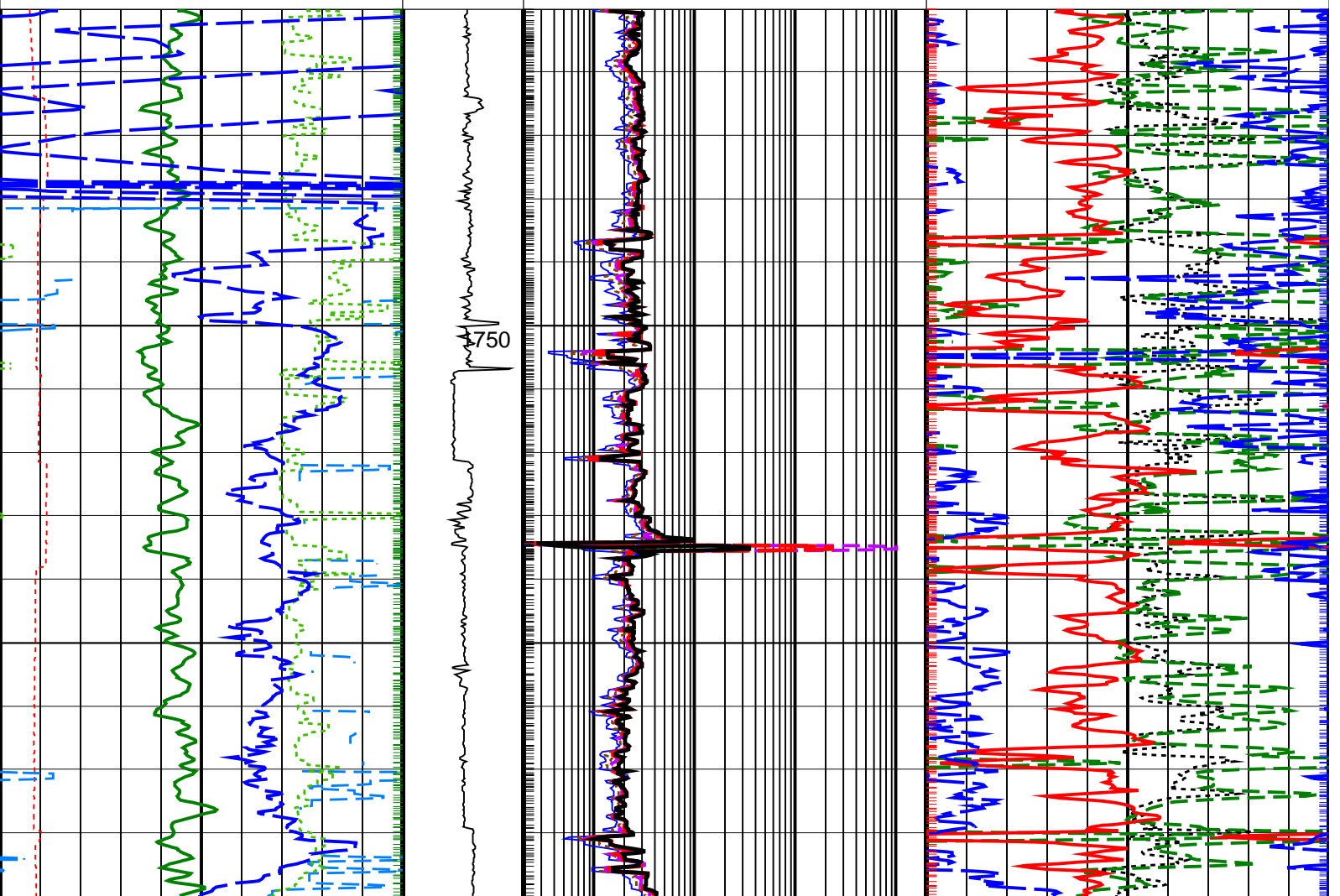
Density Samples +

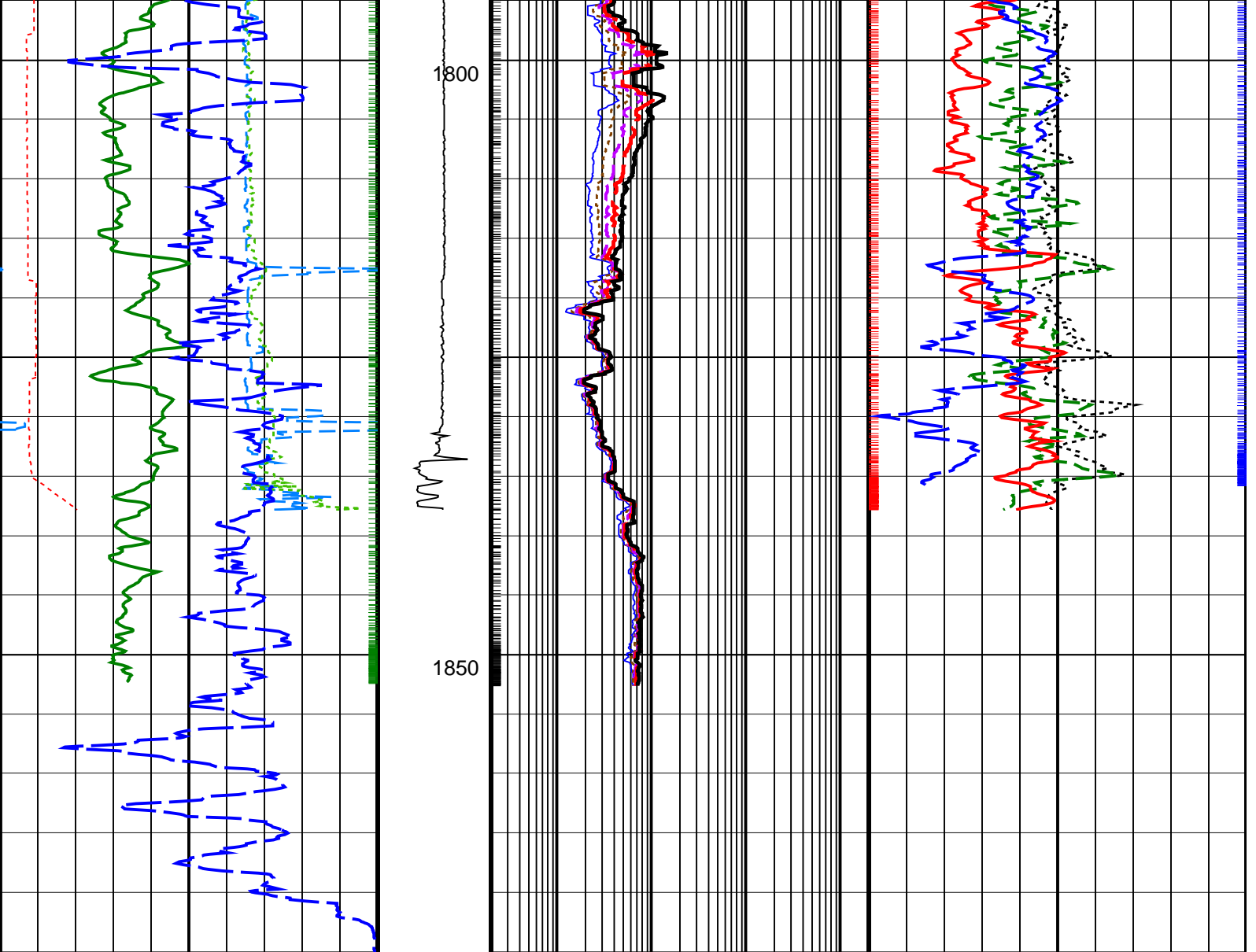
Neutron Samples +

+ ARC Gamma Ray Samples

+ ARC Resistivity Samples

<p>Rate of Penetration, Averaged over Last 5ft (ROP5_RM) (M/HR)</p> <p style="text-align: center;">200 0</p>	<p>ARC Phase-Shift Resistivity 40-in. at 2 MHz (P40H) (OHMM)</p> <p style="text-align: center;">0.2 2000</p>	
<p>ARC Gamma Ray (GR_ARC) (GAPI)</p> <p style="text-align: center;">0 200</p>	<p>ARC Phase-Shift Resistivity 34-in. at 2 MHz (P34H) (OHMM)</p> <p style="text-align: center;">0.2 2000</p>	<p>Thermal Neutron Porosity (TNPH) (PU)</p> <p style="text-align: center;">45 -15</p>
<p>Vertical Hole Diameter (VERD) (IN)</p> <p style="text-align: center;">6 16</p>	<p>ARC Phase-Shift Resistivity 28-in. at 2 MHz (P28H) (OHMM)</p> <p style="text-align: center;">0.2 2000</p>	<p>Bulk Density, Bottom (ROBB) (G/C3)</p> <p style="text-align: center;">1.95 2.95</p>
<p>Horizontal Hole Diameter (HORD) (IN)</p> <p style="text-align: center;">6 16</p>	<p>ARC Phase-Shift Resistivity 22-in. at 2 MHz (P22H) (OHMM)</p> <p style="text-align: center;">0.2 2000</p>	<p>Photoelectric Factor, Bottom (PEB) (----</p> <p style="text-align: center;">0 10</p>
<p>Density Time After Bit (TAB_DEN) (HR)</p> <p style="text-align: center;">0 10</p>	<p>ADN Rotational Speed (RPM_ADN) (RPM)</p> <p style="text-align: center;">200 0</p>	<p>ARC Phase-Shift Resistivity 16-in. at 2 MHz (P16H) (OHMM)</p> <p style="text-align: center;">0.2 2000</p>
		<p>Bulk Density Correction, Bottom (DRHB) (G/C3)</p> <p style="text-align: center;">-0.25 0.25</p>





Density Time After Bit (TAB_DEN) (HR)	ADN Rotational Speed (RPM_ADN) (RPM)	ARC Phase-Shift Resistivity 16-in. at 2 MHz (P16H) (OHMM)	Bulk Density Correction, Bottom (DRHB) (G/C3)
0 — 10	200 — 0	0.2 — 2000	-0.25 — 0.25
Horizontal Hole Diameter (HORD) (IN)		ARC Phase-Shift Resistivity 22-in. at 2 MHz (P22H) (OHMM)	Photoelectric Factor, Bottom (PEB) (----)
6 — 16		0.2 — 2000	0 — 10
Vertical Hole Diameter (VERD) (IN)		ARC Phase-Shift Resistivity 28-in. at 2 MHz (P28H) (OHMM)	Bulk Density, Bottom (ROBB) (G/C3)
6 — 16		0.2 — 2000	1.95 — 2.95
ARC Gamma Ray (GR_ARC) (GAPI)		ARC Phase-Shift Resistivity 34-in. at 2 MHz (P34H) (OHMM)	Thermal Neutron Porosity (TNPH) (PU)
0 — 200		0.2 — 2000	45 — -15
Rate of Penetration, Averaged over Last 5ft (ROP5_RM) (M/HR)		ARC Phase-Shift Resistivity 40-in. at 2 MHz (P40H) (OHMM)	
200 — 0		0.2 — 2000	

PIP SUMMARY

Density Samples †
 † ARC Gamma Ray Samples
 † ARC Resistivity Samples
 Neutron Samples †

